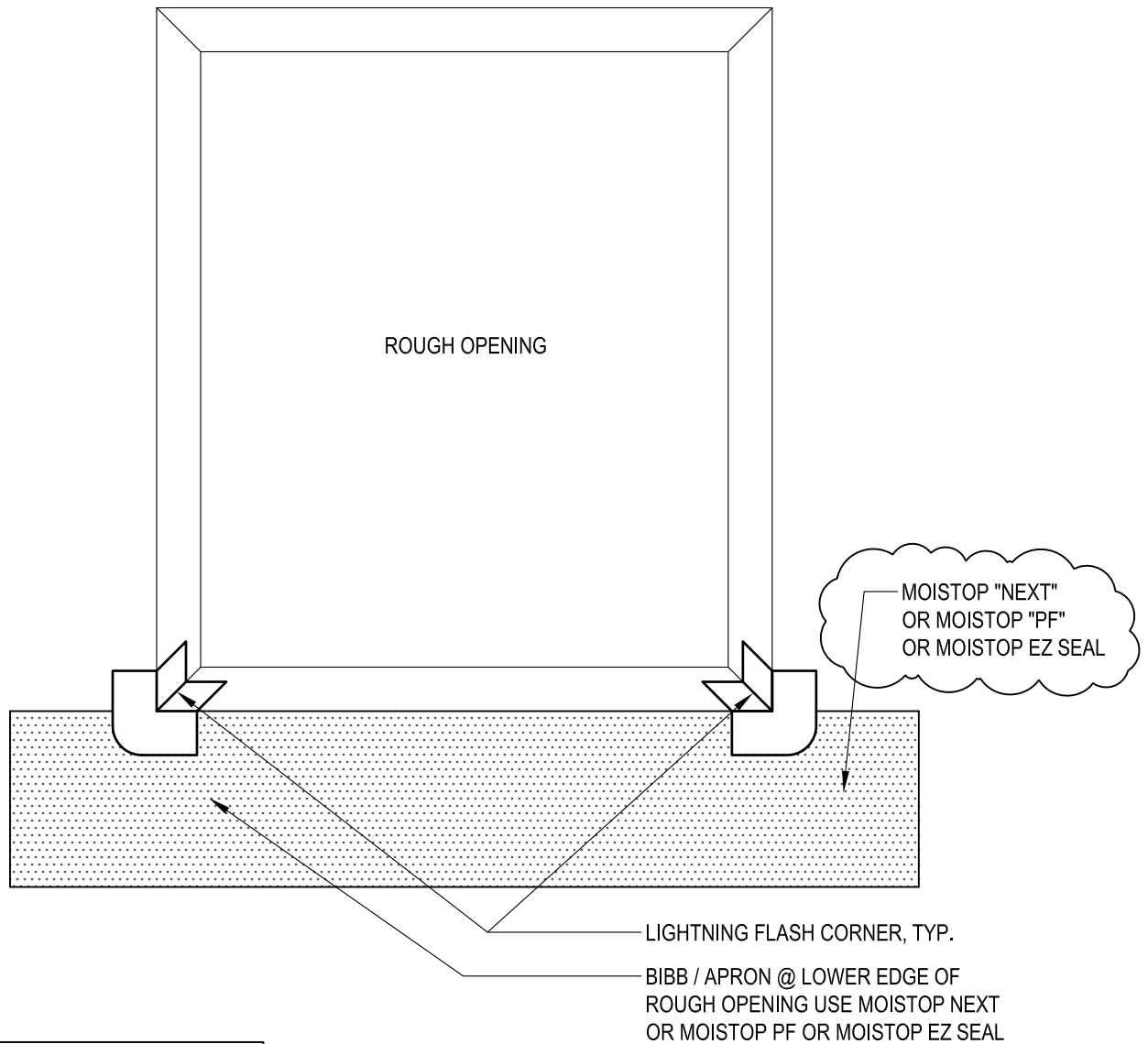


# TLS LABS BUTTERED SEALANT METHOD OF WINDOW INSTALLATION WITH PAN USING LIGHTNING FLASH CORNERS

"ELIGIBLE FOR FORTISHIELD 10 YEAR WARRANTY BY THE FORTIFIBER BUILDING SYSTEMS GROUP\*."  
AAMA METHOD B



FOR LIGHTNING FLASH CORNERS  
CONTACT: TLS LABS @  
800.310.7673 or 949.348.9291

\*ALL FLASHING PRODUCTS, SEALANT PRODUCTS AND WEATHER RESISTIVE BARRIERS  
MUST BE MANUFACTURED BY THE FORTIFIBER BUILDING SYSTEMS GROUP

SAF = SELF ADHERED FLASHING: FORTIFLASH 40, FORTIFLASH OR FORTIFLASH BUTYL

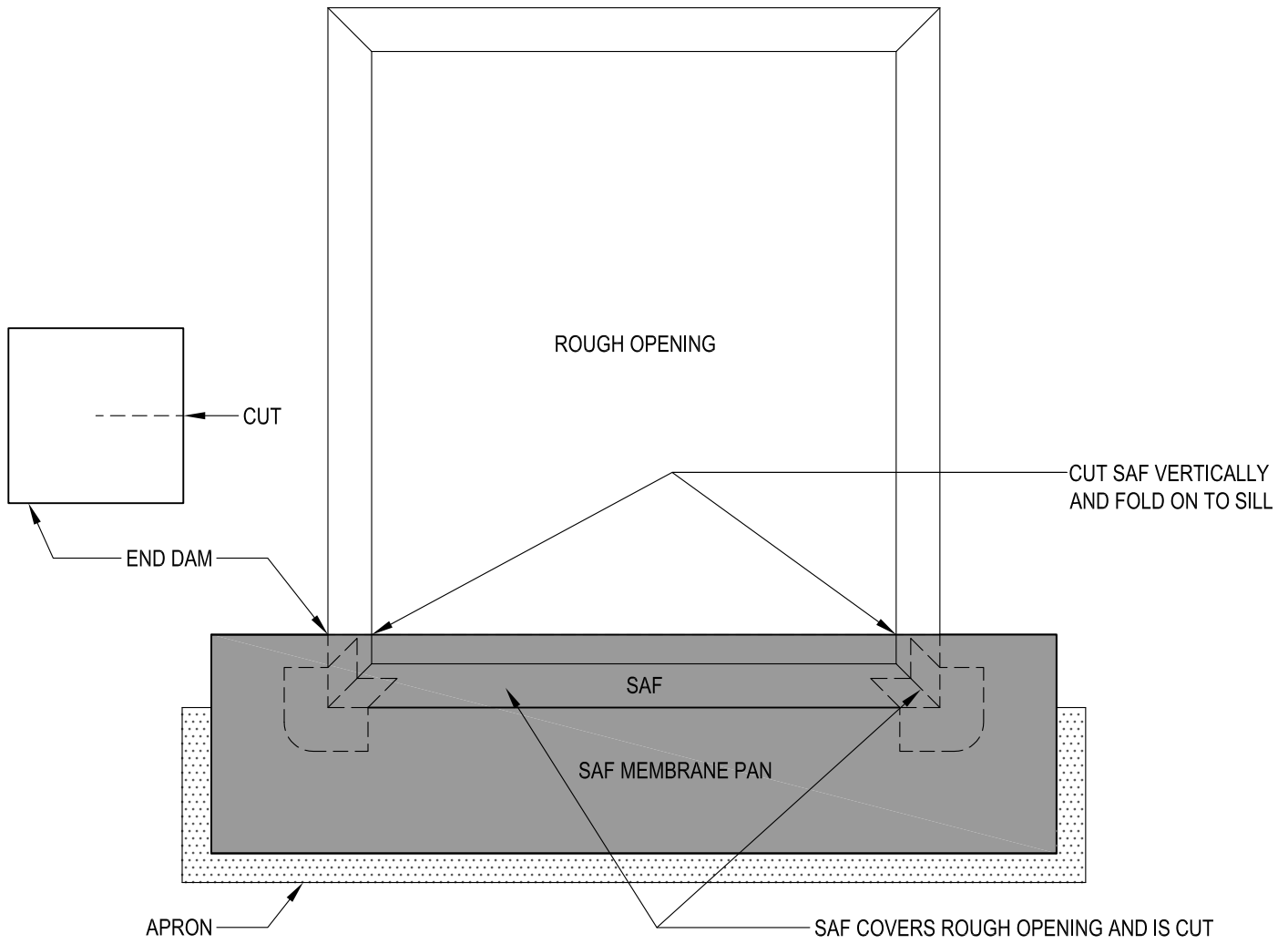
OUTSIDE VIEW

## APPLY LIGHTNING FLASH CORNERS

SCALE: 1"=1'-0"  
PAGE 1 OF 7

# TLS LABS BUTTERED SEALANT METHOD OF WINDOW INSTALLATION WITH PAN USING LIGHTNING FLASH CORNERS

"ELIGIBLE FOR FORTISHIELD 10 YEAR WARRANTY BY THE FORTIFIBER BUILDING SYSTEMS GROUP\*."  
AAMA METHOD B



FOR LIGHTNING FLASH CORNERS or J-ROLLERS  
CONTACT: TLS LABS @  
800.310.7673 or 949.348.9291

SAF COVERS ROUGH OPENING AND IS CUT VERTICALLY TO FOLD ON TO SILL  
SAF ON TOP OF CORNERS AND APRON  
CUT SQUARE PIECES OF SAF AND USE AS END DAMS ON BOTH LOWER CORNER  
J-ROLLER ALL SAF COMPLETELY

\*ALL FLASHING PRODUCTS, SEALANT PRODUCTS AND WEATHER RESISTIVE BARRIERS MUST BE MANUFACTURED BY THE FORTIFIBER BUILDING SYSTEMS GROUP TO GET THE FORTISHIELD WARRANTY

SAF = SELF ADHERED FLASHING: FORTIFLASH 40, FORTIFLASH OR FORTIFLASH BUTYL

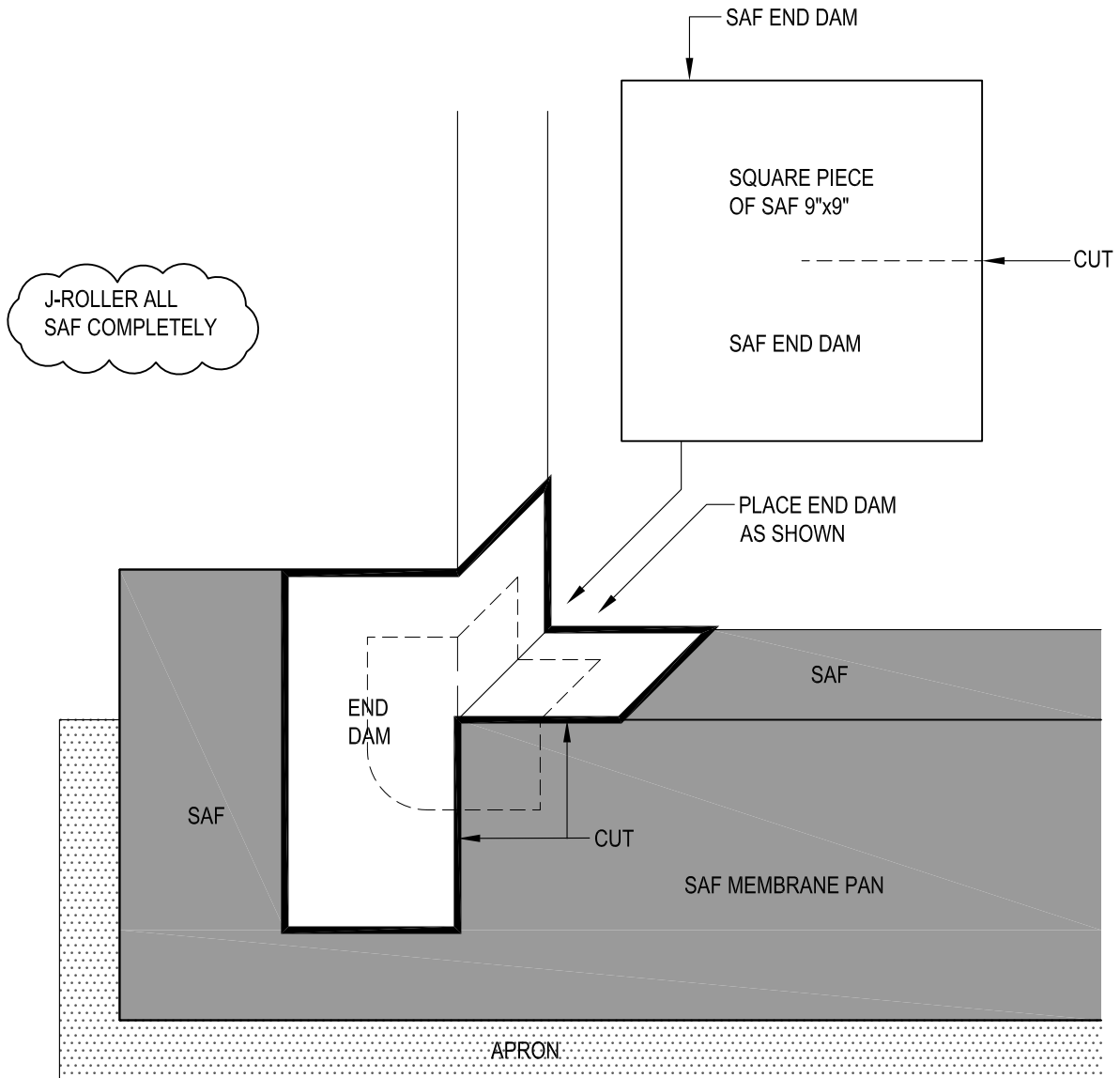
OUTSIDE VIEW

## INSTALL MEMBRANE PAN

SCALE: 1"=1'-0"

# TLS LABS BUTTERED SEALANT METHOD OF WINDOW INSTALLATION WITH PAN USING LIGHTNING FLASH CORNERS

"ELIGIBLE FOR FORTISHIELD 10 YEAR WARRANTY BY THE FORTIFIBER BUILDING SYSTEMS GROUP\*."  
AAMA METHOD B



FOR LIGHTNING FLASH CORNERS or J-ROLLERS  
CONTACT: TLS LABS @  
800.310.7673 or 949.348.9291

\*ALL FLASHING PRODUCTS, SEALANT PRODUCTS AND WEATHER RESISTIVE BARRIERS  
MUST BE MANUFACTURED BY THE FORTIFIBER BUILDING SYSTEMS GROUP TO GET THE FORTISHIELD WARRANTY

SAF = SELF ADHERED FLASHING: FORTIFLASH 40, FORTIFLASH OR FORTIFLASH BUTYL

OUTSIDE VIEW

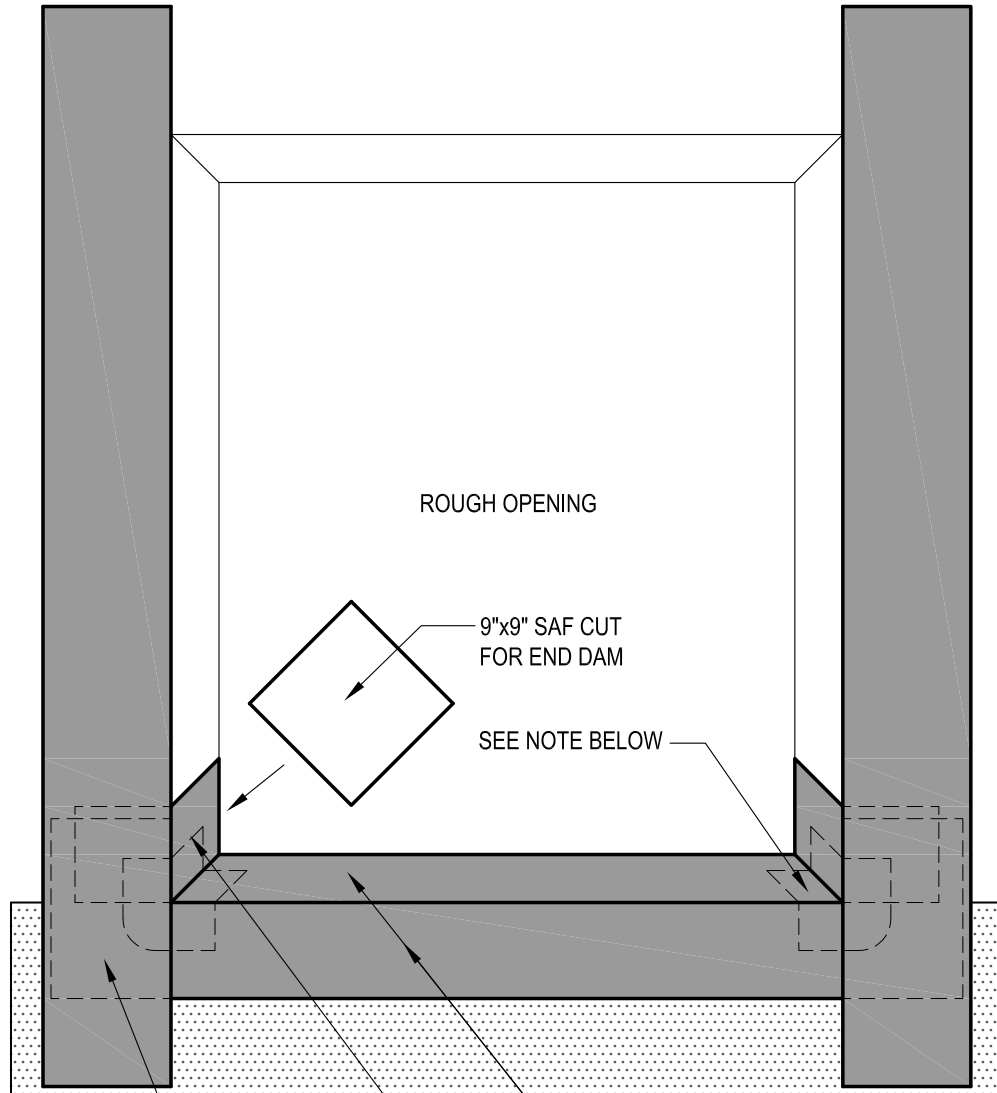
## EXPANDED VIEW OF CORNER

SCALE: NONE

PAGE 3 OF 7

# TLS LABS BUTTERED SEALANT METHOD OF WINDOW INSTALLATION WITH PAN USING LIGHTNING FLASH CORNERS

"ELIGIBLE FOR FORTISHIELD 10 YEAR WARRANTY BY THE FORTIFIBER BUILDING SYSTEMS GROUP\*."  
AAMA METHOD B



APPLY 9" SAF SIDE MEMBRANE FLASHING, TYP. (MAY SUBSTITUTE NAIL ON FOR SAF FLASHING ON SIDES & TOP

SAF MEMBRANE FLASHING ACROSS ROUGH OPENING. CUT SAF AND FOLD BACKWARDS ONTO FRAMING SILL

CUT 9" SQUARES OF SAF FOR END DAMS AND APPLY END DAMS

FOR LIGHTNING FLASH CORNERS  
CONTACT: TLS LABS @  
800.310.7673 or 949.348.9291

NOTE: LF CORNERS MUST BE COMPLETELY COVERED BY FORTIFLASH PRODUCTS

\*ALL FLASHING PRODUCTS, SEALANT PRODUCTS AND WEATHER RESISTIVE BARRIERS MUST BE MANUFACTURED BY THE FORTIFIBER BUILDING SYSTEMS GROUP

SAF = SELF ADHERED FLASHING: FORTIFLASH 40, FORTIFLASH OR FORTIFLASH BUTYL

OUTSIDE VIEW

## APPLY 9" SAF FLASHING

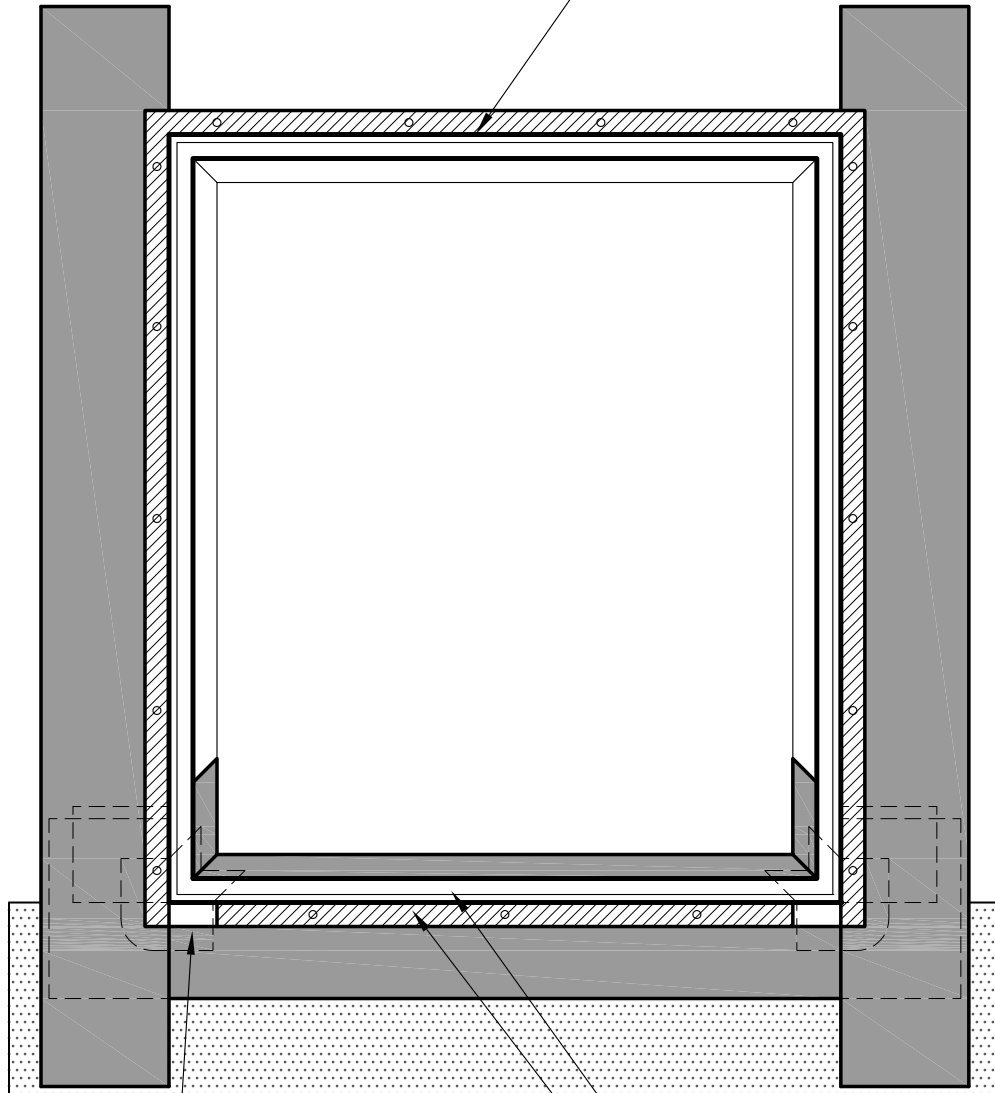
SCALE: 1"=1'-0"  
PAGE 4 OF 7

# TLS LABS BUTTERED SEALANT METHOD OF WINDOW INSTALLATION WITH PAN USING LIGHTNING FLASH CORNERS

"ELIGIBLE FOR FORTISHIELD 10 YEAR WARRANTY BY THE FORTIFIBER BUILDING SYSTEMS GROUP\*."

AAMA METHOD B

APPLY FASTENERS-SCREWS OR NAILS @ 12" O.C. TOOL DOWN EXCESS SEALANT @ HEAD OF WINDOW



LEAVE (2) 3" GAPS OF MOISTOP SEALANT @ LOWER RIGHT & LEFT OF NAIL FIN  
DO NOT APPLY FASTENERS @ GAPS IN MOISTOP SEALANT

WINDOW FRAME  
APPLY 1/2" BEAD OF MOISTOP SEALANT TO REAR OF NAIL FIN. APPLY 3/8" CAP BEAD OF MOISTOP SEALANT ON TOP OF NAIL FIN AND BUTTER FLAT  
ALTERNATE: ELIMINATE CAP BEAD OF SEALANT @ SIDES ONLY AND APPLY MOISTOP EZ SEAL ON TOP OF SIDE NAIL FIN.  
ALTERNATE AFFECTS ONLY THE SIDE NAIL FIN

\*ALL FLASHING PRODUCTS, SEALANT PRODUCTS AND WEATHER RESISTIVE BARRIERS MUST BE MANUFACTURED BY THE FORTIFIBER BUILDING SYSTEMS GROUP

SAF = SELF ADHERED FLASHING: FORTIFLASH 40, FORTIFLASH OR FORTIFLASH BUTYL

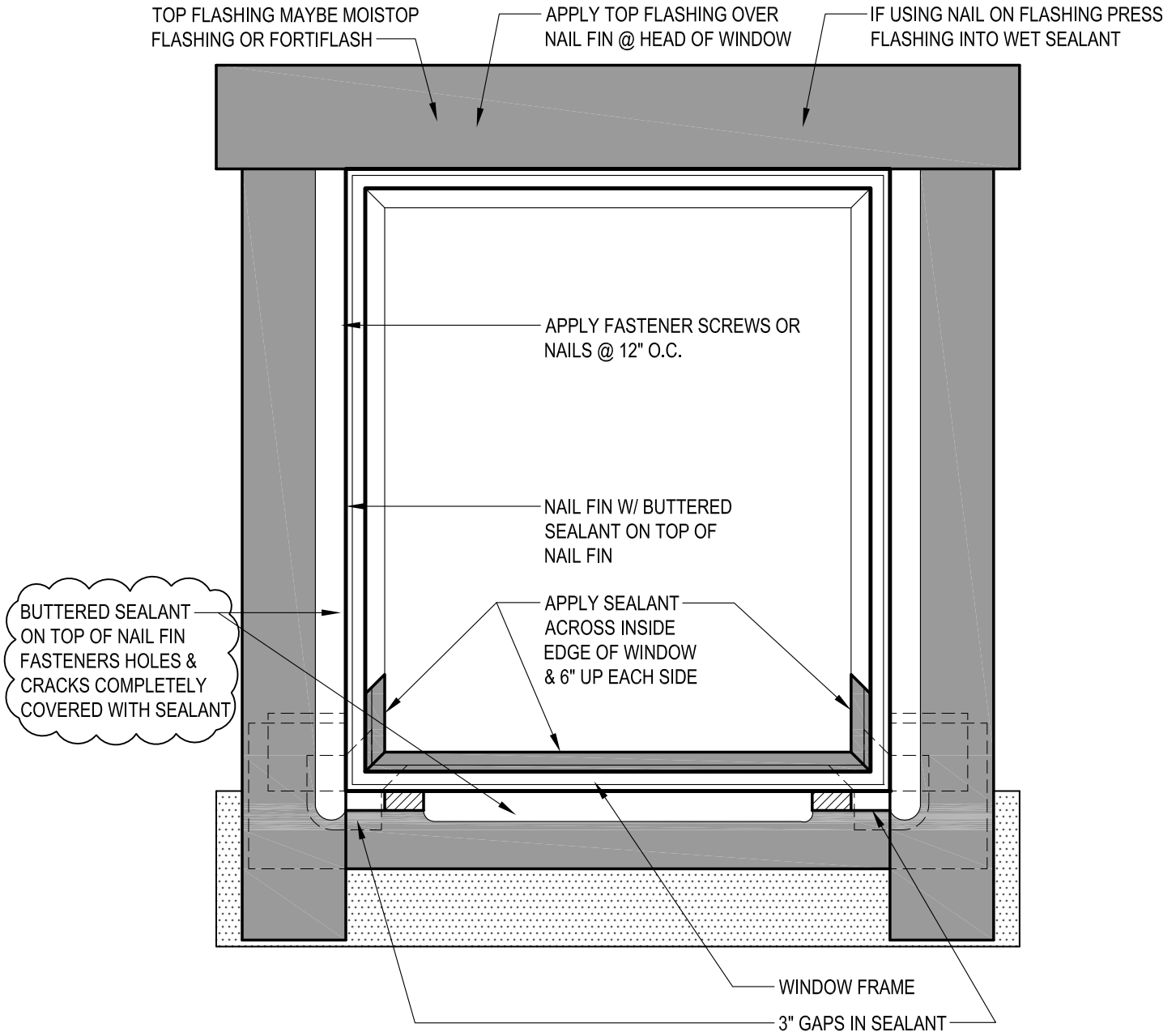
OUTSIDE VIEW

## INSTALL WINDOW

SCALE: 1"=1'-0"  
PAGE 5 OF 7

# TLS LABS BUTTERED SEALANT METHOD OF WINDOW INSTALLATION WITH PAN USING LIGHTNING FLASH CORNERS

"ELIGIBLE FOR FORTISHIELD 10 YEAR WARRANTY BY THE FORTIFIBER BUILDING SYSTEMS GROUP\*."  
AAMA METHOD B



## AAMA METHOD B WITH BUTTERED SEALANT ENHANCEMENT

\*ALL FLASHING PRODUCTS, SEALANT PRODUCTS AND WEATHER RESISTIVE BARRIERS MUST BE MANUFACTURED BY THE FORTIFIBER BUILDING SYSTEMS GROUP

SAF = SELF ADHERED FLASHING: FORTIFLASH 40, FORTIFLASH OR FORTIFLASH BUTYL

OUTSIDE VIEW

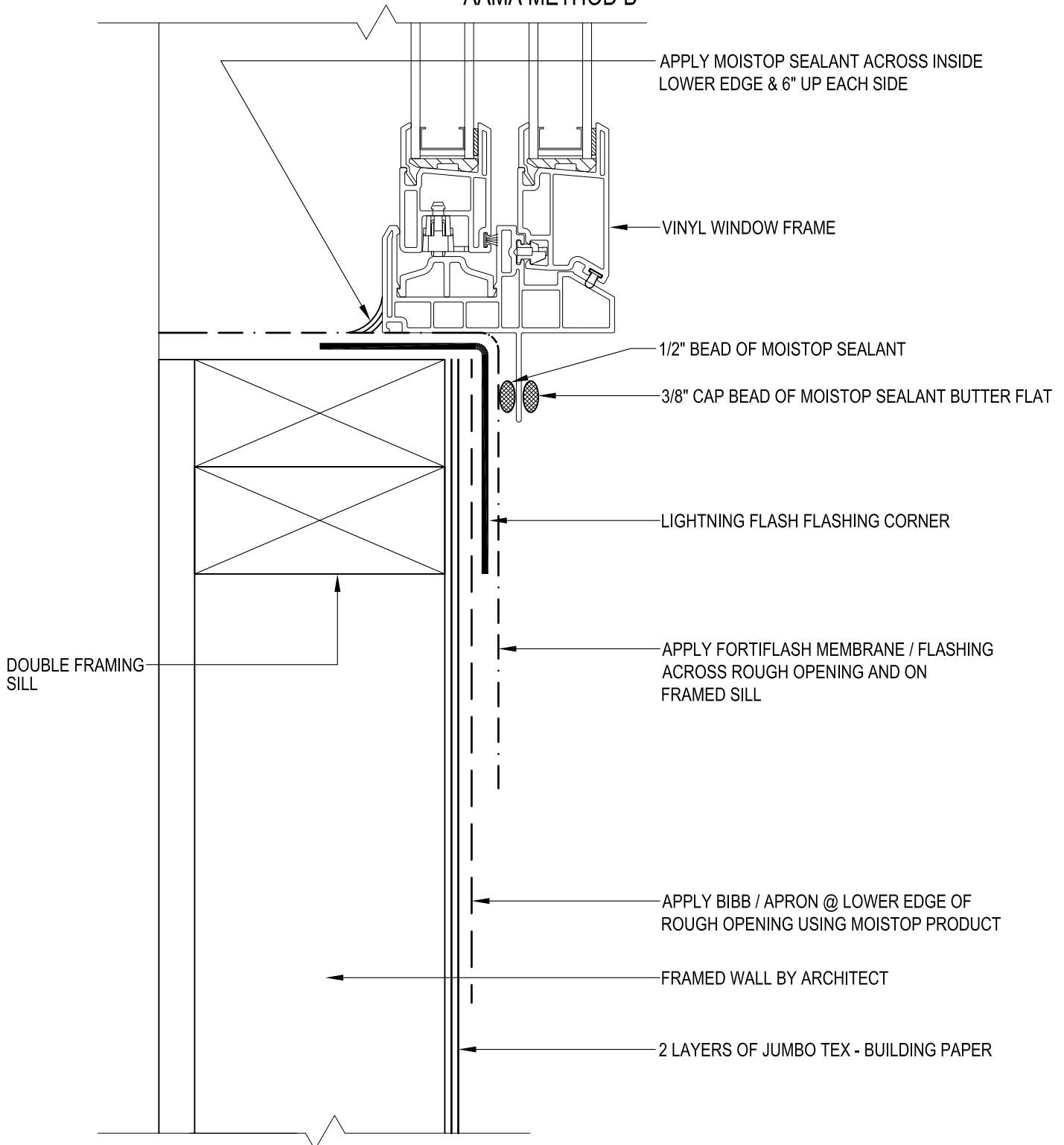
## APPLY TOP FLASHING SAF OR NAIL ON FLASHING

SCALE: 1"=1'-0"  
PAGE 6 OF 7

# TLS LABS BUTTERED SEALANT METHOD OF WINDOW INSTALLATION WITH PAN USING LIGHTNING FLASH CORNERS

"ELIGIBLE FOR FORTISHIELD 10 YEAR WARRANTY BY THE FORTIFIBER BUILDING SYSTEMS GROUP\*."

AAMA METHOD B



\*ALL FLASHING PRODUCTS, SEALANT PRODUCTS AND WEATHER RESISTIVE BARRIERS MUST BE MANUFACTURED BY THE FORTIFIBER BUILDING SYSTEMS GROUP

SAF = SELF ADHERED FLASHING: FORTIFLASH 40, FORTIFLASH OR FORTIFLASH BUTYL

## WINDOW SILL

SCALE: 6"=1'-0"

PAGE 7 OF 7